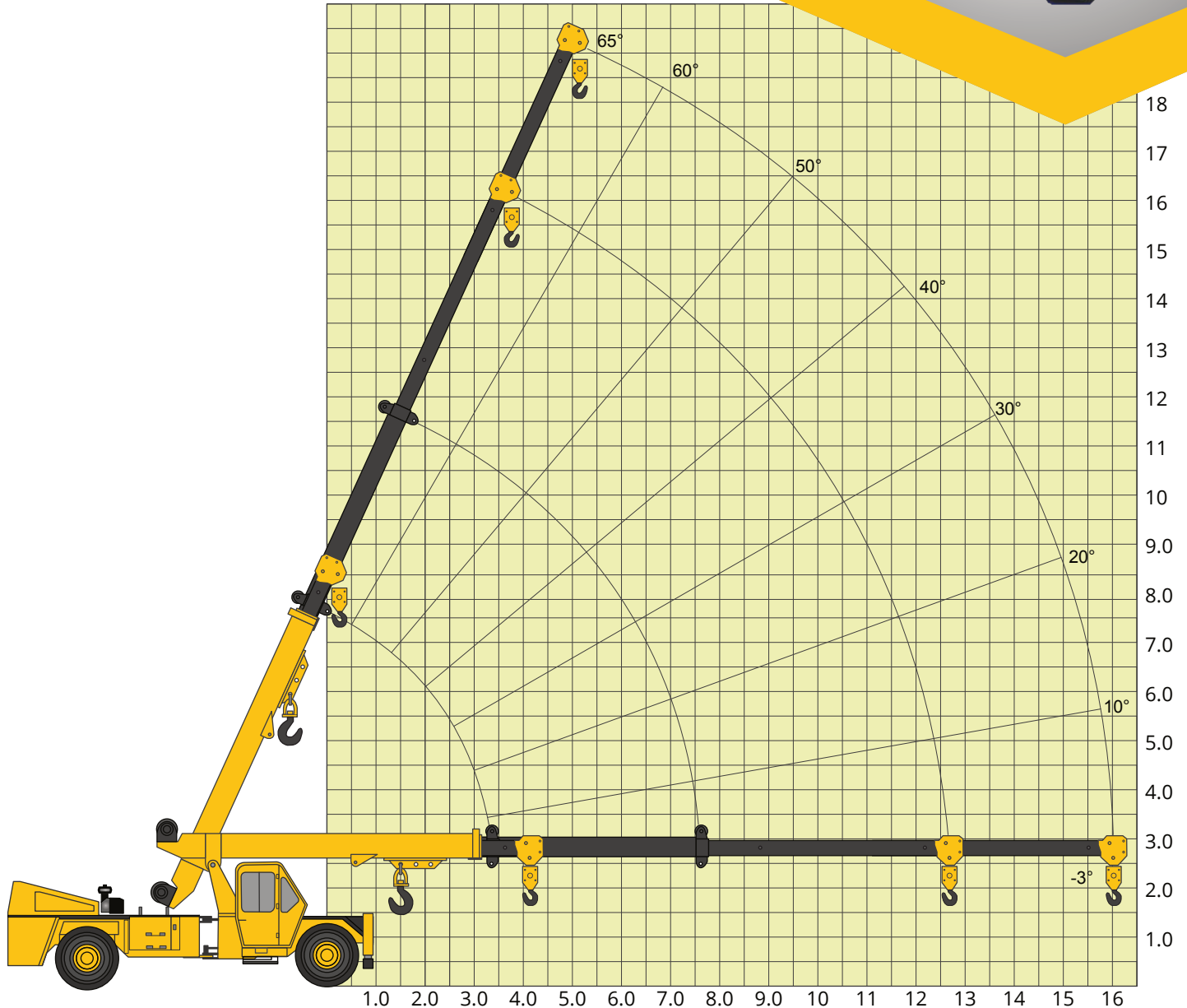


F20

PICK & CARRY CRANE



Reach (m)	1.5	1.8	2.1	3.3	4.1	12.65	16.0
Capacity (t) - 20° Articulation	20	16	14	8.9	7.0	1.5	0.9
Capacity (t) - 40° Articulation	18	15	13	8.0	6.4	1.3	0.8

1.5	1.8	2.1	3.3	4.1
20	16	14	8.9	7.0
18	15	13	8.0	6.4

12.65
1.5
1.3

16.0
0.9
0.8

- ▶ Radius is the horizontal Distance Measured from the center of front wheel to the load point
 - ▶ S.W.L are based on firm level ground with tyres 11x20 - 16 ply rating to 115 PSI. Weight of hooks, blocks, slings & chain etc. included
 - ▶ Lift & Carry - the S.W.L Shall be carried with the minimum boom length & as close to the ground as possible at speed not in excess of 2 kmph.
 - ▶ Boom head mounted RHINO hook capacity - 6000 kg
- All Dimension are in mm and are variable with in + 5%**

SPECIFICATIONS

RATED CAPACITY	Max Weight	20.0 ton at 1.50 m radius
	Max Raduis	0.9 ton at 16.0 m radius
	Max Height	18.20 m
BOOM	Length	18.3 m
	Luffing Angle	0 to 65 degrees
	Telescoping	4 part boom, 3 part hydraulically powered & fully synchronised. 4th part power extended and manually pinned for safety
	Type	Slotted boom with rope compensation
	Derricking	Through double acting hydraulic cylinders
DIMENSIONS	Length	10 900 mm
	Width	2 700 mm
	Height	3 300 mm
TRACK	Front	1 960 mm
	Rear	1 960 mm
WHEELBASE		4 880 mm
OPERATING WEIGHT	Front	7 650 kg
	Rear	10 915 kg
	Total	18 565 kg
PERFORMANCE	Speed	max 38 km/hr
	Creep Speed	1.3 kmph
	Gradeability	40% unladen
ENGINE	Make and Model	Diesel engine of VOLVO Eicher make, Model E483 TCIC, Turbo charged water cooled, developing 75.3KW @ 2400 RPM
TRANSMISSION	Drive	2 wheel drive
	Type	Synchromesh gearbox with auxillary gearbox. Speeds-10 forward and 2 reverse
	Clutch	Single, dry type friction clutch plate
STEERING	Type	Full power orbitrol with twin hydraulic double acting rams
	Articulation	40 degrees
	Turning Radius	7 850 mm
TYRES		8 nos. - 11x20 - 16 PR
BRAKES	Service	Fully air operated 'S' cam dual circuit brakes on front & real axles
	Parking	Air operated, spring actuated fail safe brakes
HYDRAULIC SYSTEM	Pump	46 cc/rev
	Control Valve	Control Valve-3 spool double acting with a built in relief & auxillary valves
HOIST MECHANISM		15 T Hydraulically operated with 6 falls snatch block. Built in safety brakes
ELECTRICAL SYSTEM		24 V, DC

